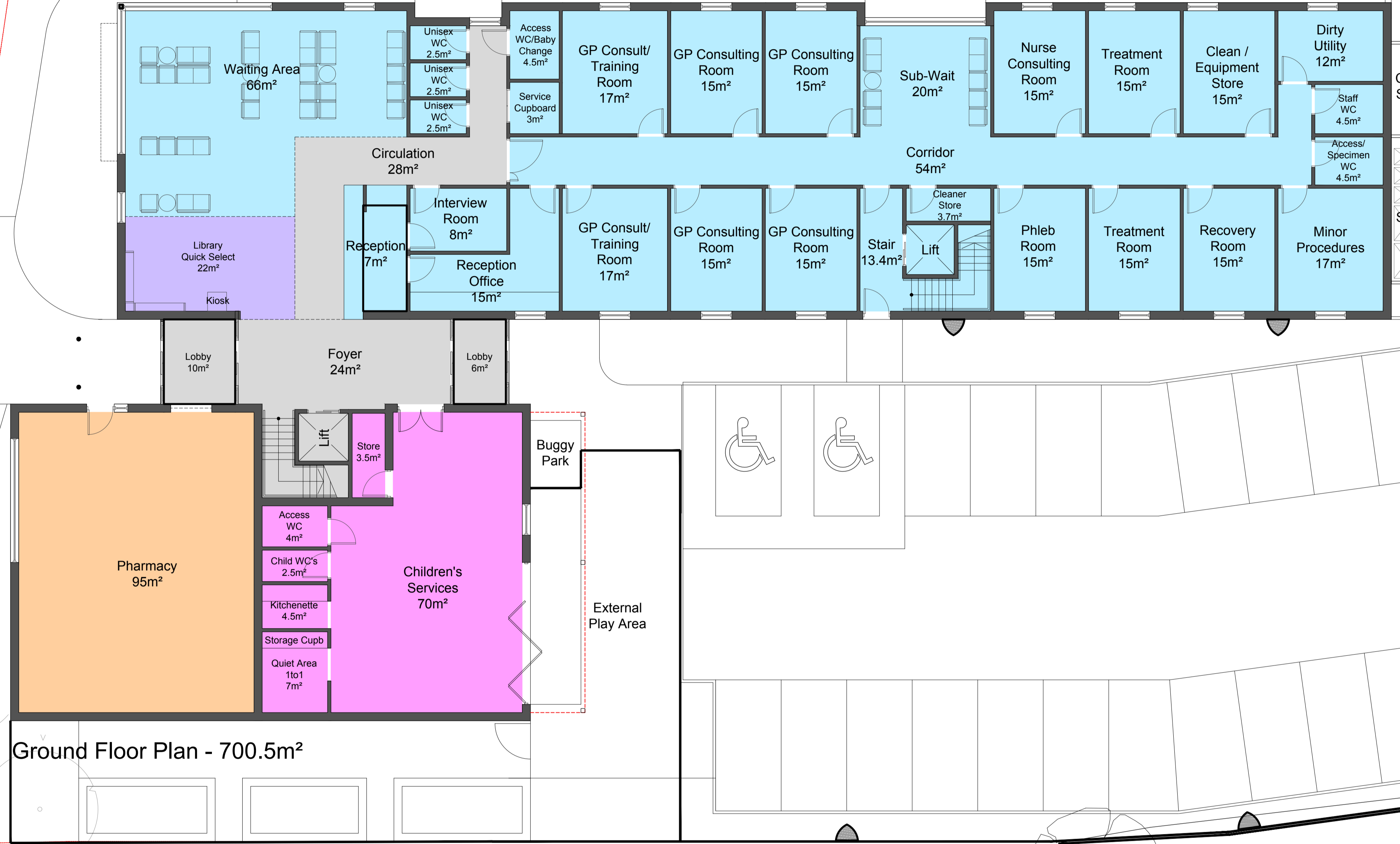


GROUND FLOOR AREAS

- Hope House Surgery = 424m<sup>2</sup>
- Pharmacy = 95m<sup>2</sup>
- Library = 22m<sup>2</sup>
- Children's Services = 91.5m<sup>2</sup>
- Circulation (Shared) = 68m<sup>2</sup>
- Total = 700.5m<sup>2</sup>**

SLOWMOTS



Ground Floor Plan - 700.5m<sup>2</sup>

NOTES:

ANY DISCREPANCIES TO BE BROUGHT TO THE ATTENTION OF GVA. COPYRIGHT OF GVA.

	A BRITISH REAL ESTATE COMPANY <b>ARCHITECTURE &amp; DESIGN</b> 17 CATHERINE COURT - BARKLEY PLACE - BRISTOL - BS1 3DQ T: 01273 800 888 E: 0117 432 0027			Hope House Surgery	
	Waterloo Road Radstock, Banes, BA3 3ER	Proposed Ground Floor Plan	07B408572	004	[-]
SCALE: 1:100		06.03.17	SIZE: A1		